

# FAIRWAY RAILING™

BY  **Envision™**  
OUTDOOR LIVING PRODUCTS

## V110 VINYL RAILING INSTALLATION QUICK GUIDE

Number of Balusters Provided Per Kit



SQUARE VINYL BALUSTERS

LEVEL	STAIR
13 - 6' Kit	12 - 6' Kit
18 - 8' Kit	17 - 8' Kit
23 - 10' Kit	



TURNUED VINYL BALUSTERS

LEVEL	STAIR
13 - 6' Kit	12 - 6' Kit
18 - 8' Kit	17 - 8' Kit
23 - 10' Kit	



ROUND ALUMINUM  
BALUSTERS

LEVEL	STAIR
16 - 6' Kit	14 - 6' Kit
22 - 8' Kit	20 - 8' Kit
26 - 10' Kit	



3-RAIL w/SQUARE  
VINYL BALUSTERS

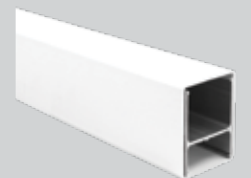
LEVEL	STAIR
13 - 6' Kit	11 - 6' Kit
17 - 8' Kit	15 - 8' Kit
23 - 10' Kit	

### LEVEL & STAIR\* KIT INCLUDES:

1 - Top Rail with  
Aluminum Insert



1 - Bottom Rail with  
Aluminum Insert



4 - Brackets with Screws

1 - Rail Support

1 - Drill Template  
(not included in stair kit)

4 - Bracket Covers

Number of balusters  
per kit shown left.

*\*Stair Kit includes all of the above  
except drill template.*

### TOOLS NEEDED:

- Drill with #2 Square Drive Bit
- Circular Saw
- Speed Square
- Tape Measure
- Drill Extension

V110

# LEVEL INSTALLATION

## BEFORE STARTING

- Review all local building codes.
- Wear proper safety equipment.

## STEP 1 GETTING STARTED

- Plumb all posts or mounting surfaces, install optional post trim at this time.
- Determine required bottom rail height from deck surface to bottom of rail based on local building codes.

## STEP 2 INSTALL MOUNTING BRACKETS

- Insert brackets into template per desired rail height - middle bracket hole location for 36" high railing, top bracket hole location for 42" high railing.

## STEP 3 CUT RAILS

- Measure distance between inside mounting brackets.
- Mark bottom rail to correct length.
- Ensure there is equal & maximum distance from baluster holes on both ends of top and bottom rails. Cut bottom rail with insert inside to length.
- Cut top rail the same, ensuring baluster holes line up.

**NOTE:** Ensure bottom aluminum insert is inserted into the bottom rail with the DEEP SIDE of channel facing the routed side of rail.

## STEP 4 INSERT BALUSTERS

- Insert balusters into bottom rail.

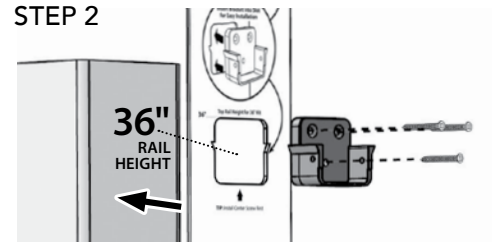
## STEP 5 INSTALL TOP RAIL

- Place top rail onto balusters, starting from one end.
- Set top rail into brackets and install two (2) #10 x 3/4" self-drilling screws through holes in both sides of each bracket, securing top rail in place.

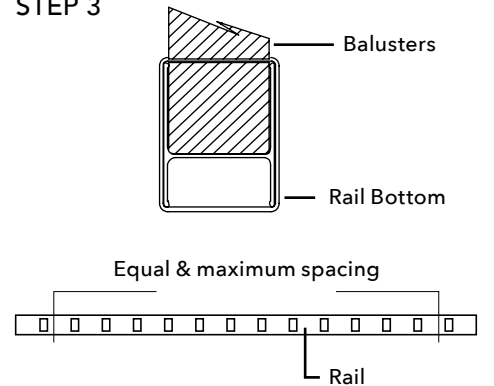
## STEP 6 FINISHING STEPS

- Measure to underside of bottom rail and cut rail support to measured height
- Measure to center of bottom rail and secure rail support with 3/4" stainless steel screw
- Carefully bend bracket cover and install cover over brackets.
- With rail mounted in place, measure and mark post sleeves to desired height.
- Cut post to desired height with a saw and clean edge of cut.
- Apply a small bead of silicone to the inside edge of post cap and install on top of post sleeve (let set 12 hours for adhesive to cure).

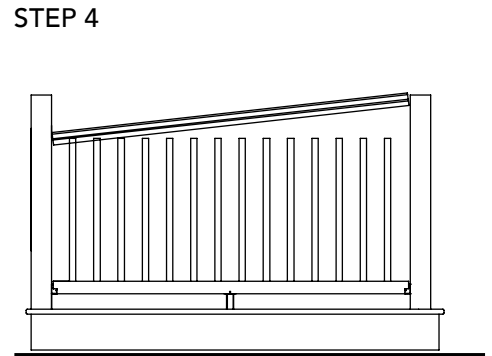
### STEP 2



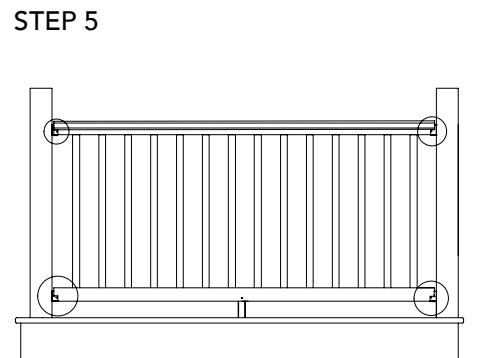
### STEP 3



### STEP 4



### STEP 5



*It is the responsibility of the installer to meet or exceed all code and safety requirements, and to obtain all required building permits. These instructions are only a guide and may not address every circumstance. The installer should determine and implement appropriate installation techniques for each situation. Fairway Building Products shall not be held liable for improper or unsafe installations.*

# STAIR INSTALLATION

## BEFORE STARTING

- Review all local building codes.
- Wear proper safety equipment.

## STEP 1 GETTING STARTED

- Plumb all posts or mounting surfaces, install optional post trim at this time.
- Determine required bottom rail height from deck surface to bottom of rail based on local building codes.

## STEP 2 CUT RAILS

- Lay bottom rail against post resting on stair and deck nosing. Balance out spacing between post and closest baluster with equal and maximum distance. Mark rails where it intersects with posts (Top & Bottom).
- If posts are plumb, top rail will be the same length. Make certain spacing matches bottom rail and mark. Cut rails with a saw. You may cut both vinyl and aluminum at the same time.

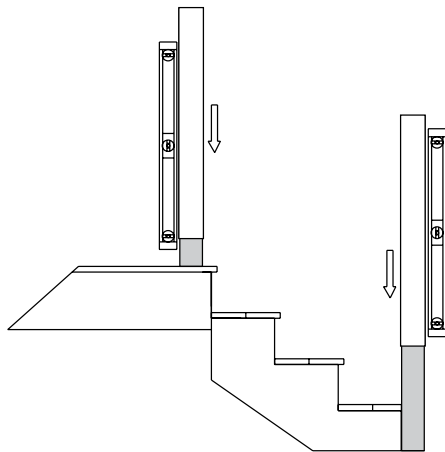
## STEP 3 INSTALL BRACKETS, BALUSTERS, & RAILS

- With rails cut to length, slide mounting bracket on rail ends.
- Set bottom rail between posts, adjust height between rail and nosing and center bracket on post. Install four (4) #8 x 1-1/2" S.S. screws in both mounting brackets of bottom rail.
- Insert balusters in pre-routed holes in bottom rail. **TIP: In some cases, it may be necessary to modify mounting bracket if covering the baluster hole.**
- Set top rail between posts and insert balusters in matching holes on bottom rail. **TIP: Start at the bottom of stair run and work up.**
- With all balusters inserted, center mounting flange on post and install screws same as bottom brackets.
- With all mounting screws installed, snap screw covers over screw holes.

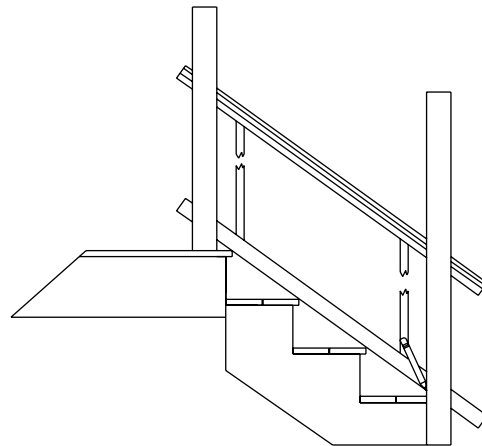
## STEP 4 FINISHING STEPS

- With rail mounted in place, measure and mark post sleeves to desired height.
- Cut post to desired height with a saw and clean edge of cut.
- Apply a small bead of silicone to the inside edge of post cap and install on top of post sleeve (let set 12 hours for adhesive to cure).

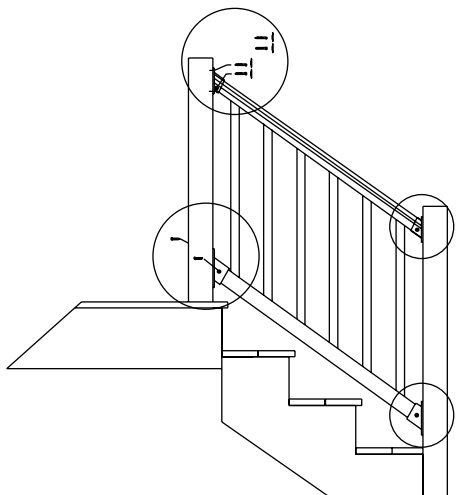
STEP 1



STEP 2



STEP 3



STEP 4

